

# Python Installation Instructions

## Prerequisites:

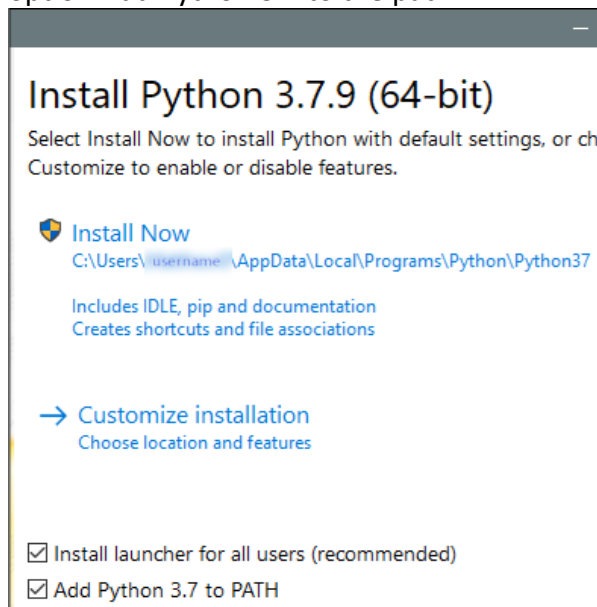
- Imaris XT license
- Only **Python 2.7 or 3.7** are supported
- Recommendation: Use Python **3.7.9**

## Download Python:

- <https://www.python.org/downloads/release/python-379/>

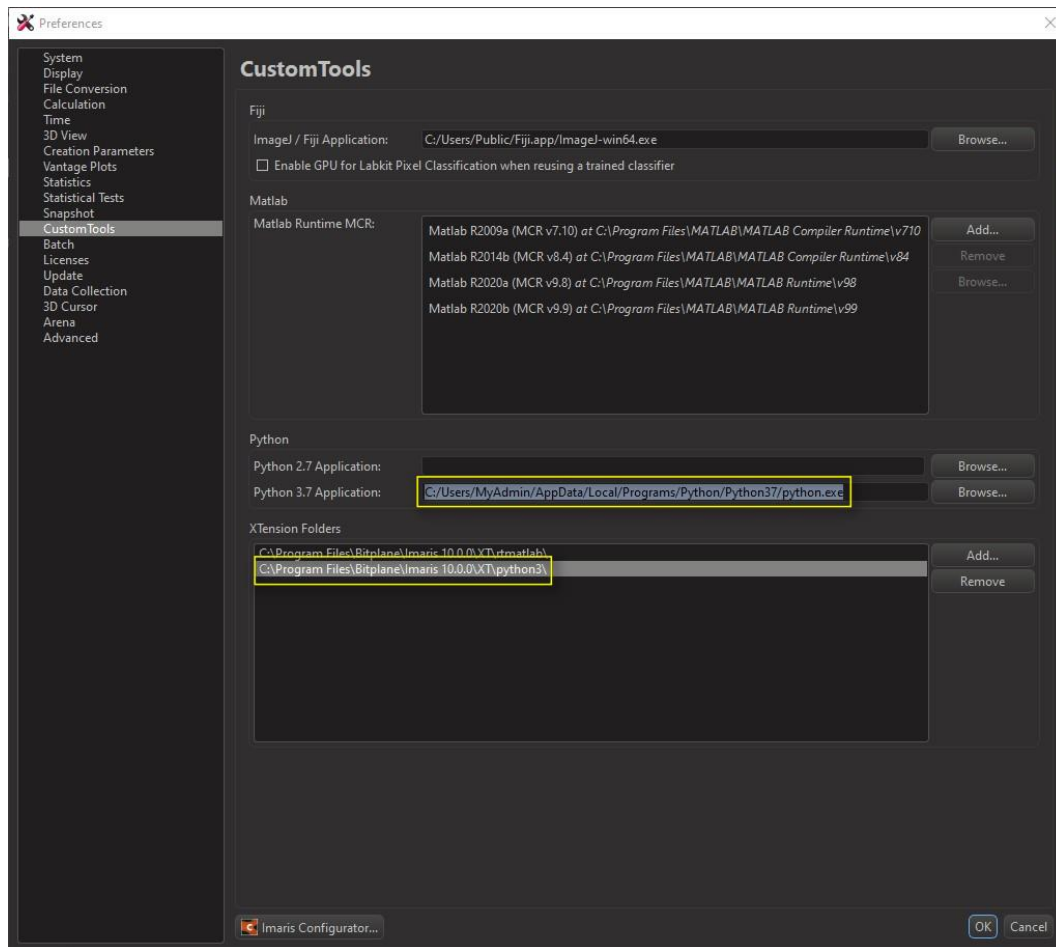
## Installation:

- Follow the installer instructions and choose the default path if possible and enable the option Add Python 3.7 to the path.

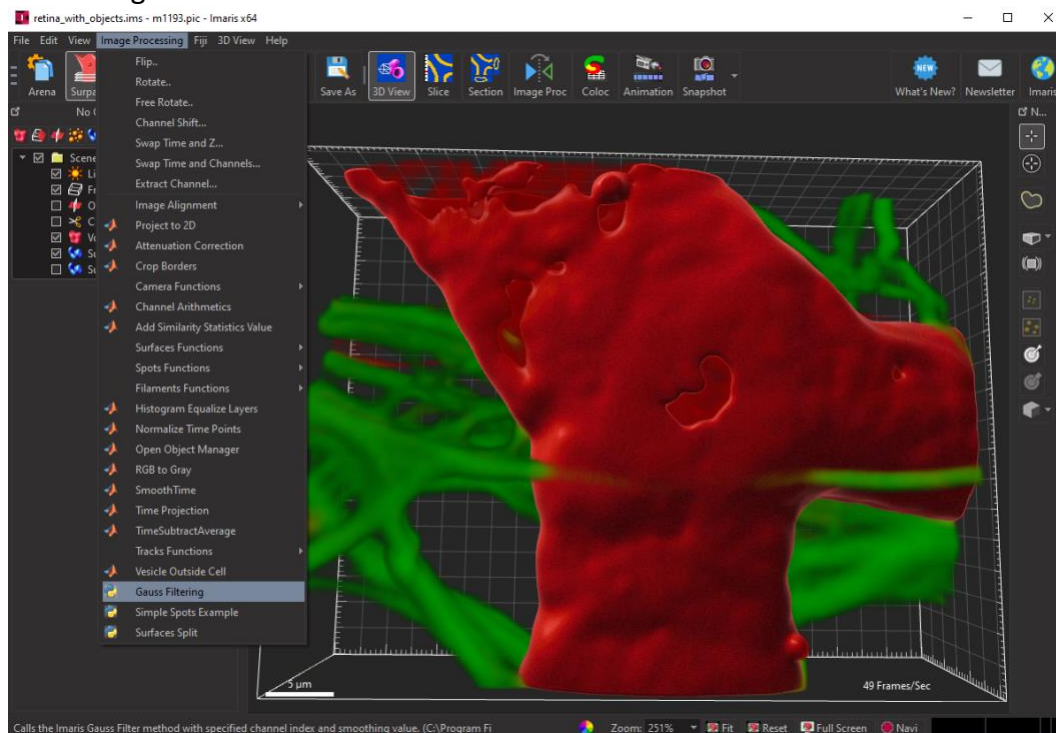


## Adjust Imaris – Preferences – Custom Tools:

- Start Imaris
- Menu File – Preferences - Custom Tools
- Use Browse to specify the path to the Python 3.7 Application
- Default: C:/Users/MyAdmin/AppData/Local/ Programs/Python/Python37/python.exe
- Use Add... to add the Path to the Python 3 Xtension
- Default: C:\Program Files\Bitplane\Imaris 10.0.0\XT\python3\

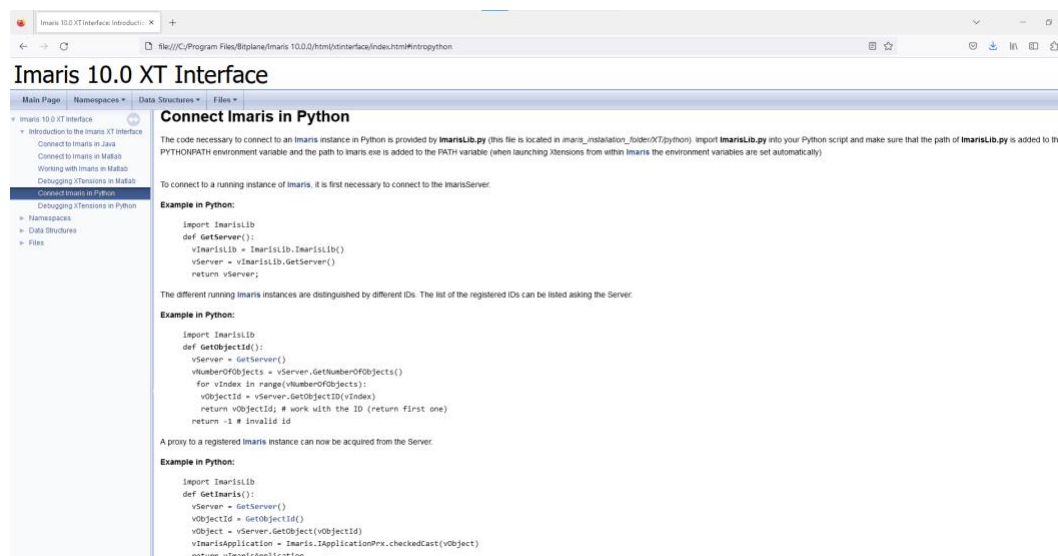
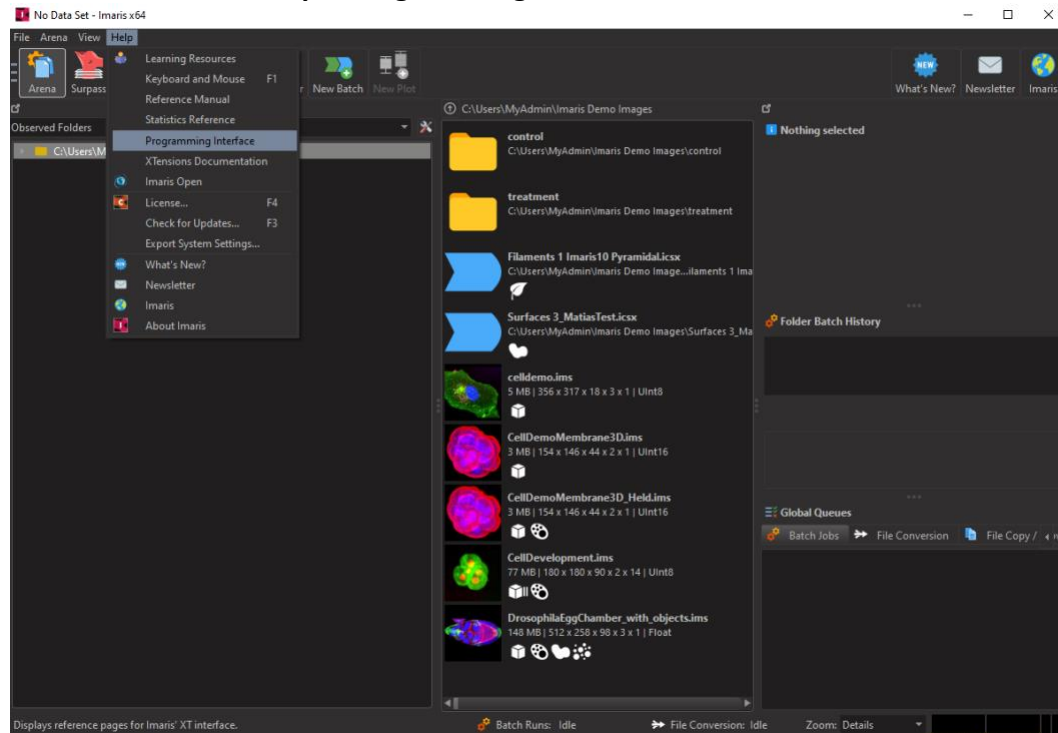


- **ATTENTION: Python2 Xtensions do not work with Python 3.7!**
- 3 example Python Xtensions are delivered with Imaris that are now show in the Image Processing Menu

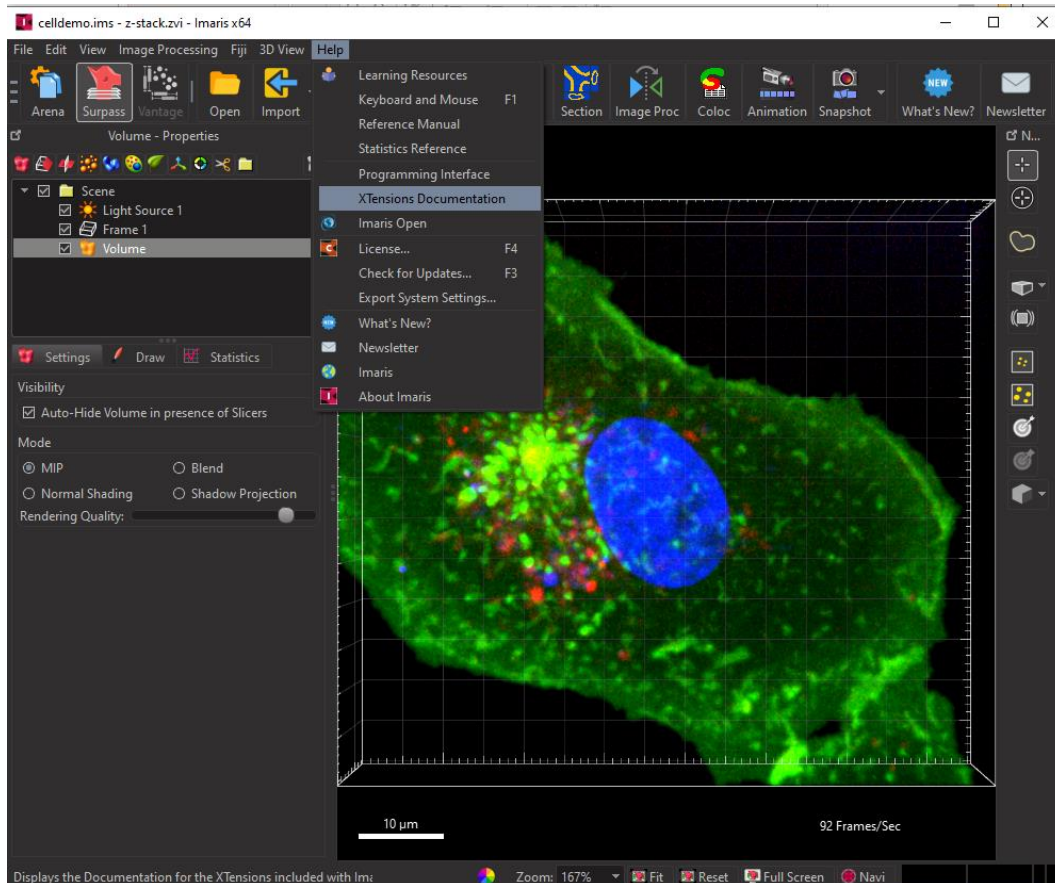


## Further Resources:

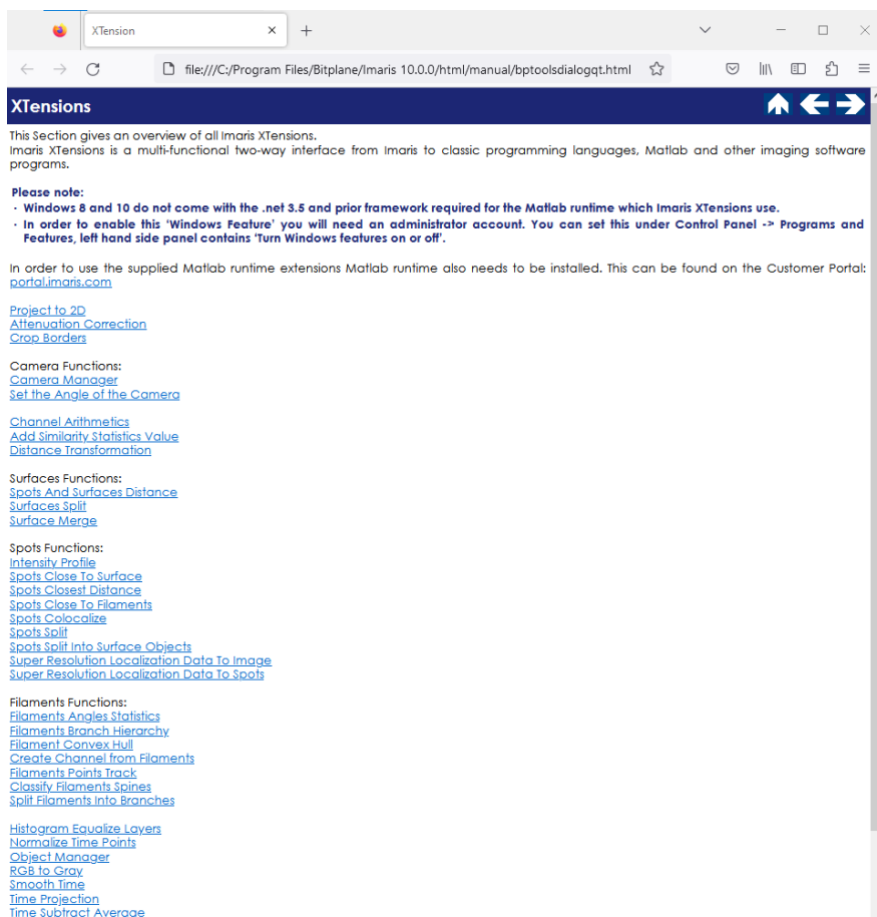
### - Imaris – Menu Help – Programming Interface



### - Imaris – Menu Help – Xtension Documentation

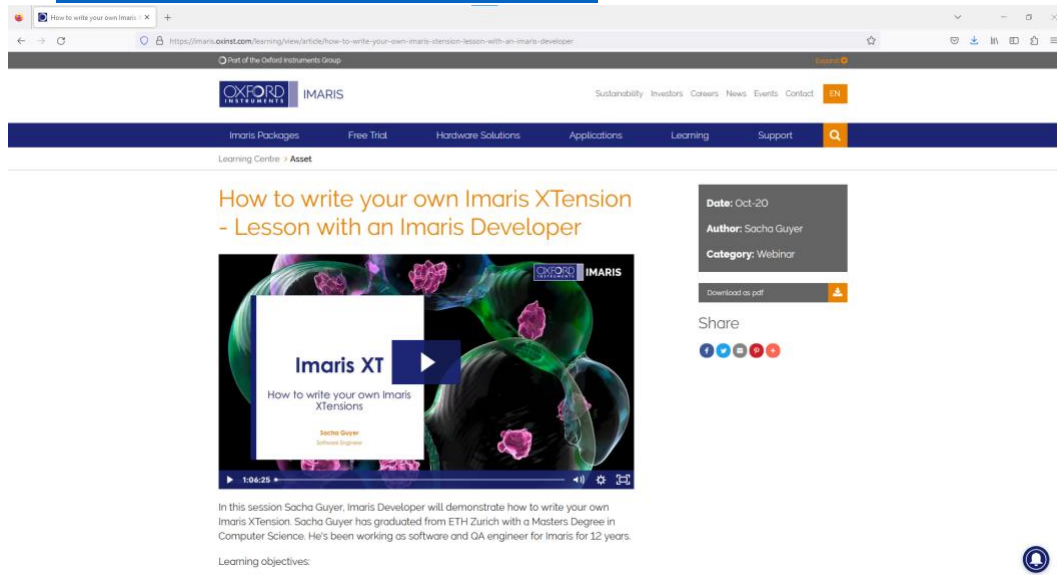


There are mainly Matlab XTensions described **but** the general workflow and handling of different classes and functions is the same!



- Learning Center

- <https://imaris.oxinst.com/learning/>
- <https://imaris.oxinst.com/homeschool>
- <https://imaris.oxinst.com/learning/view/article/how-to-write-your-own-imaris-xtension-lesson-with-an-imaris-developer>



## General Hints

- Start with adjusting existing Xtensions
  - Advantage: Connection with IMAris directly established
  - Drawback: no error messages or exceptions are visible
- Starting the installed Python IDLE will not be automatically connected to IMAris
  - Use a start script to launch a Python IDLE connected to IMAris!

```
startPythonImaris.bat - Notepad
File Edit Format View Help
@echo off
set IMARISVERSION=10.0.0
set PYTHONFOLDER=C:\Users\MyAdmin\AppData\Local\Programs\Python\Python37
set PYTHONVERSION=3
set IMARISFOLDER=C:\Program Files\Bitplane\Imaris %IMARISVERSION%
set PATH=%IMARISFOLDER%;%PATH%
set PYTHONPATH=%IMARISFOLDER%\XT\python%PYTHONVERSION%;%IMARISFOLDER%\XT\python%PYTHONVERSION%\private;%PYTHONPATH%;%PYTHONFOLDER%\python.exe %PYTHONFOLDER%\Lib\idlelib\idle.pyw
```

- 
- Start this script from the command line

```
Administrator: Command Prompt
C:\Users\MyAdmin\Desktop>startPythonImaris.bat
```

- 
- Start with simple examples
- Start with small changes in the code to see errors easily